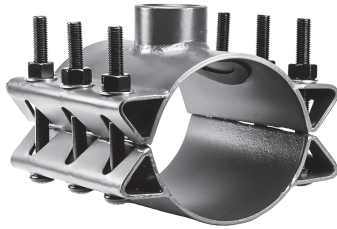


# JCM 418 Threaded Outlet Tapping Sleeve

For taps and connections on larger pipe, thin wall pipe and pipe requiring extra reinforcement.



The JCM 418 Fabricated Threaded Outlet Tapping Sleeve is especially recommended for service connections, air relief valve connections, taps on larger A/C, Cast Iron, Ductile Iron, PVC and Reinforced Concrete Pipe. The heavy gasket section and full sleeve support of this fitting offer much more stability, pipe reinforcement and strength than a strapped saddle, yet they are competitively priced. Readily available for pipe 4" and larger requiring IPS outlets of 3/4" through 4", these sleeves are furnished with shop coat and alloy bolts. Epoxy coating and stainless steel bolts are available at an additional charge.

## HOW TO ORDER

1. Determine O.D. of pipe and outlet size.
2. Check listing to determine catalog number.
3. For sizes not listed, order by pipe O.D. size

Example: For 24" Cast Iron with 25.80 O.D. with 3"IP outlet, order: 418-2580 x 17IP.

For All Stainless Steel see 438 Threaded Outlet Tapping Sleeve

## 418 FABRICATED THREADED OUTLET TAPPING SLEEVE (IPS Outlet)

NOM. PIPE SIZE (IN.)	SLEEVE O.D. RANGE (IN.)	CATALOG NUMBER X OUTLET SIZE	APPR. WT. EACH (LBS.)	OUTLET SIZE	ORDER CODE IP
2	*2.38	418-0238 X --	12	3/4"	06
	*2.50	418-0250 X --	12	1"	08
3	3.50	418-0350 X --	18	1-1/4"	10
	3.96	418-0396 X --	18	1-1/2"	12
4	4.50	418-0450 X --	21	2"	14
	4.80	418-0480 X --	21	2-1/2"	16
6	6.63	418-0663 X --	23	3"	17
	6.90	418-0690 X --	23	4"	18
8	8.63	418-0863 X --	31	* Outlets Available 3/4 - 2" IP/CC  2" CC Not Available	
	9.05	418-0905 X --	33		
10	10.75	418-1075 X --	38		
	11.10	418-1110 X --	40		
12	12.75	418-1275 X --	48		
	13.20	418-1320 X --	51		
14	14.59 - 15.08	418-1475 X --	54		
	15.23 - 15.80	418-1530 X --	57		
	16.30 - 16.73	418-1650 X --	60		
16	17.33 - 17.87	418-1740 X --	64		
	18.62 - 19.19	418-1875 X --	68		
18	19.41 - 20.01	418-1950 X --	72		
	20.93 - 21.57	418-2130 X --	77		
20	21.51 - 22.15	418-2160 X --	80		
	23.46 - 24.16	418-2400 X --	87		
24	25.71 - 26.41	418-2580 X --	95		
	28.14 - 28.84	418-2834 X --	104		
30	31.62 - 32.22	418-3200 X --	115		
36	38.10 - 38.75	418-3830 X --	139		
42	44.10 - 44.70	418-4450 X --	160		
48	50.40 - 51.00	418-5080 X --	183		
54	56.60 - 57.25	418-5710 X --	205		

OTHER SIZES AVAILABLE UPON REQUEST.

Available Options for JCM 418:

- Epoxy Coated with Stainless Steel Hardware (additional charge).
- With CC Threaded Outlet (additional charge).

