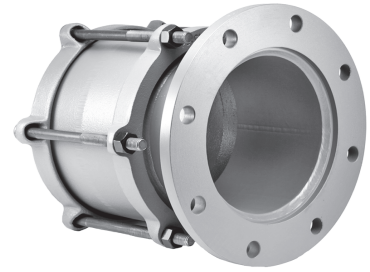


JCM 306 Fabricated Flanged Coupling Adapters

The JCM 306 Fabricated Flanged Coupling Adapter combine the versatile JCM Ductile Iron Coupling system with a fabricated flanged end to provide a fitting which allows for pipe misalignment, less critical pipe end preparation and ease of equipment installation and removal. The 306 FCAs are easily adapted from one type of pipe to another with the simple JCM Transition Gasket system. These FCAs simplify installations on larger A/C pipe and are available in the hard to find 10" and 12" sizes.



MATERIAL SPECIFICATIONS JCM 306 & 307 FCA:

- Body/follower:** Ductile Iron ASTM A536
- Flanged End:** Fabricated ASTM A285 Grade C Steel with AWWA C207 Class D Flange, with ANSI 150 lb. drilling.
- Gaskets:** Styrene-Butadiene Rubber (SBR) has good physical properties. Compounded for use with water, salt solutions, mild acids and bases; has excellent abrasion resistance. Per ASTM D-2000. Standard temperature range from -40° to 150°F (-40° to 65° C) constant, maximum intermittent 180° F (82° C). For applications on high temperatures or chemical pipelines, contact JCM Industries Technical Services. The material is not recommended for use on oil, ozone or weather resistant applications.
- Bolts:** Corrosion resistant, high strength low alloy bolts and nuts (AWWA C-111, ANSI A21.11). Flanged bolts not furnished. Optional Stainless Steel, 18-8 Type 304.
- Finish:** Heavy coating of corrosion resistant metal primer. Optional Fusion applied Epoxy Coating available.

JCM Industries bolted couplings meet or exceed the ANSI/AWWA C-219 Standard as applicable.

306 FLANGED COUPLING ADAPTERS

NOM. PIPE SIZE (IN.)	COUPLING O.D. RANGE (IN.)	NOM. FLANGE SIZE	CATALOG NUMBER	OVERALL LENGTH (IN.)	APPR. WT. EACH (LBS.)
3	3.50	3	306-0350 X 3	12	32
	3.80 - 4.17	3	306-0396 X 3	12	32
4	4.50	4	306-0450 X 4	12	42
	4.80 - 5.10	4	306-0480 X 4	12	42
	5.10 - 5.40	4	306-0535 X 4	12	46
6	6.63	6	306-0663 X 6	12	59
	6.90 - 7.20	6	306-0690 X 6	12	59
	7.20 - 7.55	6	306-0740 X 6	12	68
8	8.63	8	306-0863 X 8	12	86
	9.05 - 9.40	8	306-0905 X 8	12	86
	9.40 - 9.75	8	306-0960 X 8	12	91
10	10.75	10	306-1075 X 10	12	115
	11.10 - 11.40	10	306-1110 X 10	12	115
	11.60 - 12.05	10	306-1200 X 10	12	129
12	12.75	12	306-1275 X 12	12	163
	13.20 - 13.50	12	306-1320 X 12	12	163
	13.92 - 14.40	12	306-1420 X 12	12	175

Larger sizes available upon request.

Epoxy coating and stainless steel bolts available as an extra.

Integral retainer set screws are available as an extra. Add (R) to end of catalog number. Price on application.

NOTE: Restraining set screws are not for use on Asbestos Cement, HDPE or PVC pipe.

NOTE: Applications in which pipe may move out of the coupling, proper anchorage of the pipe must be provided.

