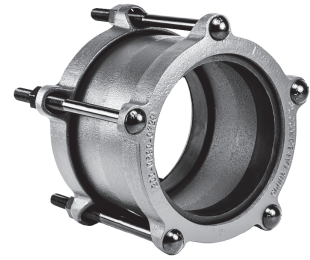


# JCM Ductile Iron Couplings

## Now Offering 14" - 24" Nominal Pipe Sizes

JCM Ductile Iron Couplings employ the mechanical compression joint principle to join two pieces of plain end pipe. Eliminates precise cutting and fitting in the field, provides for deflection, limited expansion-contraction, pipe settlement and a quick easy means of disassembly for maintenance. JCM Bolted Coupling meet or exceed the ANSI/AWWA C219 Standard as applicable. **Note: Applications in which pipe may move out of the coupling, proper anchorage of the pipe must be provided.**



### 210 DUCTILE IRON COUPLINGS - STANDARD SIZE

NOM. PIPE SIZE (IN.)	PIPE O.D. RANGE (IN.)	CATALOG NUMBER	FITS TYPE AND CLASS OF PIPE	NO. OF BOLTS	SLEEVE LENGTH (IN.)	APPR. WT. EACH (LBS.)
2	2.34 - 2.63	210-0250	STEEL, PVC, CI	2	5	8
2-1/4, 2-1/2	2.62 - 2.92	210-0288	CI, STEEL, PVC	2	5	9
3	3.80 - 4.17	210-0396	CI, DI, A/C 150	3	6	15
4	4.80 - 5.10	210-0480	CI, DI, A/C 150, C-900PVC, DI HDPE	4	6	20
6	6.90 - 7.20	210-0690	CI, DI, A/C 150, C-900 PVC, DI HDPE	5	6	24
8	9.05 - 9.40	210-0905	CI, DI, A/C 150, C-900 PVC, DI HDPE	6	6	36
10	11.10 - 11.40	210-1110	CI, DI, C-900 PVC, DI HDPE	7	6	46
12	13.20 - 13.50	210-1320	CI, DI, C-900 PVC, DI HDPE	8	6	62
14	15.30 - 15.70	210-1530	CI, DI, C-905 PVC, DI HDPE	9	7	100
16	17.40 - 17.80	210-1740	CI, DI, C-905 PVC, DI HDPE	10	7	132
18	19.10 - 19.70	210-1950	CI, DI, C-905 PVC, DI HDPE	12	7	140
20	21.35 - 21.75	210-2160	CI, DI, C-905 PVC, DI HDPE	12	7	150
24	25.70 - 26.00	210-2580	CI, DI, C-905 PVC, DI HDPE	14	10	285

### 210 DUCTILE IRON COUPLINGS - OVERSIZED (A/C Class 200 & oversized pipe)

NOM. PIPE SIZE (IN.)	PIPE O.D. RANGE (IN.)	CATALOG NUMBER	FITS TYPE AND CLASS OF PIPE	NO. OF BOLTS	SLEEVE LENGTH (IN.)	APPR. WT. EACH (LBS.)
4	5.10 - 5.40	210-0535	Oversized and Class 200 A/C	4	6	22
6	7.20 - 7.55	210-0740	Oversized and Class 200 A/C	5	6	31
8	9.40 - 9.75	210-0960	Oversized and Class 200 A/C	6	6	41
10	11.60 - 12.05	210-1200	Oversized and Class 200 A/C	7	6	55
12	13.92 - 14.40	210-1420	Oversized and Class 200 A/C - STEEL	8	6	68

### 211 DUCTILE IRON COUPLINGS - IPS PVC, IPS HDPE, STEEL PIPE

NOM. PIPE SIZE (IN.)	PIPE O.D. RANGE (IN.)	CATALOG NUMBER	FITS SIZES OF PIPE STEEL	NO. OF BOLTS	SLEEVE LENGTH (IN.)	APPR. WT. EA. (LBS.)
2	2.38	210-0250	STANDARD IPS & SCHEDULE PIPE	2	5	8
2-1/2	2.88	210-0288	STANDARD IPS & SCHEDULE PIPE	2	5	9
3	3.50	211-0350	STANDARD IPS & SCHEDULE PIPE	3	6	15
4	4.50	211-0450	STD. IPS PVC, SCHEDULE PIPE, IPS HDPE	4	6	20
6	6.63	211-0663	STD. IPS PVC, SCHEDULE PIPE, IPS HDPE	5	6	25
8	8.63	211-0863	STD. IPS PVC, SCHEDULE PIPE, IPS HDPE	6	6	38
10	10.75	211-1075	STD. IPS PVC, SCHEDULE PIPE, IPS HDPE	7	6	46
12	12.75	211-1275	STD. IPS PVC, SCHEDULE PIPE, IPS HDPE	8	6	64
16	16.00	211-1600	STD. IPS PVC, SCHEDULE PIPE, IPS HDPE	10	7	132
18	18.00	211-1800	STD. IPS PVC, SCHEDULE PIPE, IPS HDPE	12	7	140
20	20.00	211-2000	STD. IPS PVC, SCHEDULE PIPE, IPS HDPE	12	7	150
24	24.00	211-2400	STD. IPS PVC, SCHEDULE PIPE, IPS HDPE	13	7	165



Certified to NSF/ANSI 61