

JCM INDUSTRIES

P. O. Box 1220, Nash, TX 75569-1220

Phone 800-527-8482 or 903-832-2581

Fax 800-874-9524 or 903-838-6260

www.jcmindustries.com

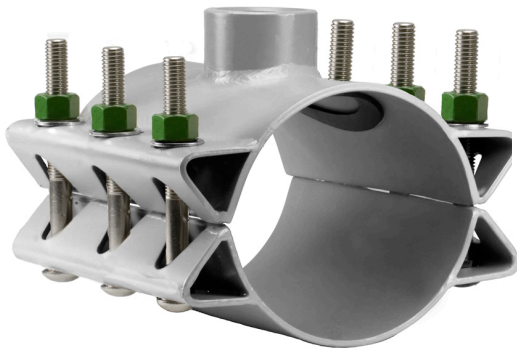
Typical Specification

JCM 6438 Stainless Steel Threaded Outlet Tapping Sleeve

Service fittings shall be the high strength Stainless Steel 18-8 Type 316, which conforms to and supports the pipe. Sleeve shall be minimum 8" wide and be sized to fit and reinforce the pipe circumference. Sleeve outlet shall have a wide Buna-N gasket in a machined groove around the threaded outlet. Service fitting shall be furnished with 316 stainless steel bolts, nuts and washers.

Service fittings shall be JCM 6438 Stainless Steel Threaded Outlet Tapping Sleeve or approved equal.

JCM 400 Series Tapping Sleeves are ANSI/NSF Standard 61, Annex G and ANSI/NSF 372 Certified. JCM 400 Series Tapping Sleeves meet MSS-SP124 and ANSI/AWWA Standard C223 Fabricated Steel and Stainless Steel Tapping Sleeves as applicable.



JCM 6438 Stainless Steel
Threaded Outlet Tapping
Sleeve

This typical specification, provided by JCM Industries, is a proposed guideline for use by specifying agencies to ensure significant design and material features of this product are included within the agencies' individual specifications.

JCM INDUSTRIES

P. O. Box 1220, Nash, TX 75569-1220

Phone 800-527-8482 or 903-832-2581

Fax 800-874-9524 or 903-838-6260

www.jcmindustries.com

Material Specification

JCM 6438 Stainless Steel Threaded Outlet Tapping Sleeve

Body: Stainless Steel 18-8 Type 316.

Bolts: Stainless Steel 18-8 Type 316.

Outlet: 316 Stainless Steel.

Gasket: Nitrile Butadiene Rubber (NBR, Buna-N) per ASTM D2000. Molded virgin rubber with a pressure activated hydro mechanical design. Gasket is bonded into a cavity for internal and external retention. Gasket temperature range -40°F to 212°F (-40°C - 100°C) Gasket suitable for water, salt solutions, mild acids, bases, and sewage.

Service Rating: 3/4" - 4" outlets: 250 PSI. Higher service rating available for specific applications and sizes

Options: JCM 438 All (304) Stainless Steel Threaded Outlet Tapping Sleeve

JCM 400 Series Tapping Sleeves are ANSI/NSF Standard 61, Annex G and ANSI/NSF 372 Certified.
JCM 400 Series Tapping Sleeves meet MSS-SP124 and ANSI/AWWA Standard C223 Fabricated Steel and Stainless Steel Tapping Sleeves as applicable.



Effective 09.10.19