

# JCM INDUSTRIES

P. O. Box 1220, Nash, TX 75569-1220

Phone 800-527-8482 or 903-832-2581

Fax 800-874-9524 or 903-838-6260

[www.jcmindustries.com](http://www.jcmindustries.com)

## Typical Specification

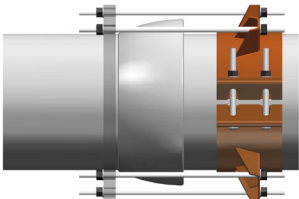
### JCM 630 Fitting Restrainer for Asbestos Cement Pipe

### JCM 631 Joint Restrainer for Asbestos Cement Pipe

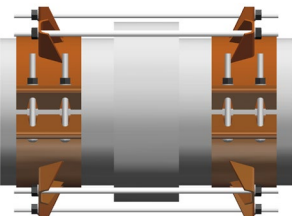
Restrainers for Asbestos Cement Pipe 4" and larger shall be provided by mechanical means separate from the mechanical joint gasket sealing gland.

The restrainer shall be a split, two piece configuration and provide a wide supportive contact around the full circumference of the pipe. Restrainer body shall be manufactured from steel per ASTM A36, A516 GR 70 or equal. Width and dimensions shall be as listed. The restrainer fasteners shall be per A242/ANSI 21.11/AWWA C111. Restrainers shall have a pressure rating of 150 PSI working pressure. For higher pressure ratings, contact the manufacturer. Restrainers shall be JCM Industries 630 or 631 Restrainers for Asbestos Cement Pipe.

### JCM 630 Fitting Restrainer for Asbestos Cement Pipe



### JCM 631 Joint/Coupling Restrainer for Asbestos Cement Pipe



# JCM INDUSTRIES

P. O. Box 1220, Nash, TX 75569-1220

Phone 800-527-8482 or 903-832-2581

Fax 800-874-9524 or 903-838-6260

[www.jcmindustries.com](http://www.jcmindustries.com)

## Material Specification

### JCM 630 Fitting Restrainer for Asbestos Cement Pipe

### JCM 631 Joint Restrainer for Asbestos Cement Pipe

**Restrainer Body:** Pressure Vessel Quality Steel ASTM A36, A516 GR 70 or equal.

**Bolts and Nuts:** Corrosion resistant high strength, low alloy oval neck track head bolts per ASTM A242 and nuts per ASTM A563 or equal. Optional Stainless Steel available.

**Finish:** Standard Shop Coat - heavy coating of corrosion inhibiting metal primer. Optional Fusion applied Epoxy Coating per ANSI/AWWA Standard C213

**Sizes:** 4" and larger. Contact JCM Industries for ranges and sizes not listed.

**Rating:** Fittings rated for 150PSI. For higher pressures, contact JCM Industries, Inc.