

Installation Instructions Model 309 Fabricated Dismantling Joint

Read instructions before starting installation*

For purposes other than water, contact JCM Industries for application and product assistance.

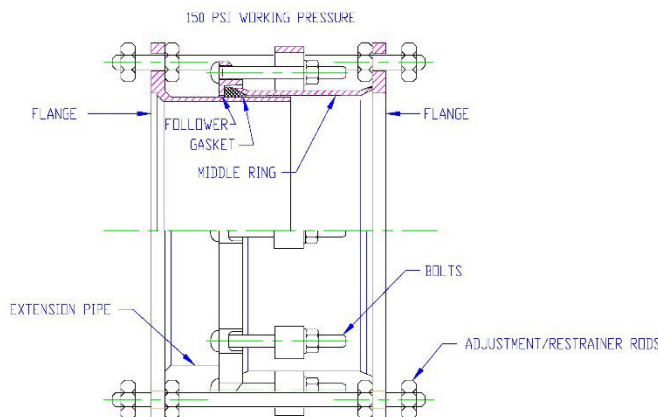
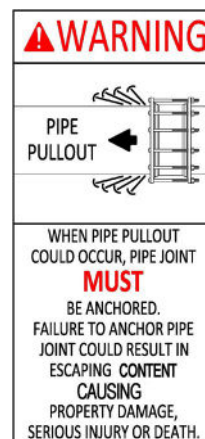
Review of "Tricks of the Trade" on the reverse will assist with installation.

Flange bolts and gaskets are not included.

1. Clean and scrape pipe. Remove any scale, pipe wrap, debris or dirt that may interfere with the complete sealing of the gasket. Inspect pipe for integrity, size, outside diameter and surface irregularities. Confirm the proper size and range of coupling. Measure gap or take-up area to determine the distance required and confirm 309 capabilities (2" standard adjustment). Inspect fitting to ensure all parts are included. Check mating flanges to ensure they match flange bolt-hole drilling pattern. Inspect the flanged ends for any gouges, grooves, irregularities or imperfections that will interfere with the flange connection. Fittings furnished with stainless steel hardware, see reverse for fastener management.
2. Lubricate the pipe and the fitting gasket with soapy water. Do not use oil base pipe lubricant.
3. Loosen coupling bolts of the follower flange to loosen the gasket seal and allow for easy movement of flanged spigot into flanged casing. Loosen restrainer rod back-up nuts to allow for closing of fitting. Remove outside nuts to install restrainer rods into pipe system flanges. Do not disassemble fitting.
4. Close the dismantling joint by pushing the flanged spigot into the flanged casing; reduce laying length enough to install between pipe flange connections.
5. Place fitting between pipe system flanged ends, use appropriate flange gaskets (not included), bolt flanged casing to pipe system flange. Adjust the length of the dismantling joint by pulling (telescoping) the flanged spigot to the correct length to meet up with the opposite pipe system flange. Align bolt holes of flanges by rotating the flanged spigot if necessary. Proceed with bolt up of flanged spigot and pipe system flange connection. Install restrainer rods to pipe system flanges, tighten back-up nuts to flange; install outside nuts onto restrainer rods and tighten. Tie rods must be in place for restraint.
6. With 309 in place and both flanges bolted into pipe system, tighten the coupling bolts of the follower flange to compress the gasket onto the flanged spigot wall for a watertight seal. Tighten bolts to the following torque levels:

Recommended Bolt Torque: 5/8" Bolts - 75 Ft Lbs of Torque

Flange bolts should be tightened before tightening nuts on the coupling end ring. Pressure test prior to backfilling.



*Ensure fitting is suitable for application (confirm size, materials, pressure ratings, line content, meets local governing & association standards, etc.). Pipeline operation forces, including pressure fluctuations, thermal expansion/contraction, movement/shifting, etc. will influence the success of the application. Proper anchorage, restraint, harnessing, thrust blocks or other devices must be provided to prevent pipe movement (lateral, angular, axial) or pipe pullout from the bolt-on fitting. Inspection of the pipe integrity is the responsibility of the end user. JCM recommends the use of calibrated torque wrench. Failure to follow installation instructions will result in voided product warranty.



INT309-06212023

For application review or questions contact JCM Industries at 1-800-527-8482, 903-832-2581



Tricks of the Trade for Installation Model 309 Fabricated Dismantling Joint

JCM Quality Fitting Equipped With 18-8 Stainless Steel Bolts and Nuts

When not properly handled it is the nature of stainless steel fasteners to gall and freeze (seize up). This is due to the inherent properties of the stainless material. Galling and freezing is often triggered by the presence of metal chips, burrs and grains of sand on the threads of the bolts and nuts. Extra care has been taken by JCM prior to assembly and packing of this fitting to assure a trouble-free installation.

1. The nuts and bolts are made from material of different hardness so that they have different strengths.
2. Standard 5/8" and 3/4" nuts are coated with a special blue or green (antiseize) coating. Additional lubricant may be needed. Uncoated stainless steel hardware is provided without lubrication to prevent a build-up of dirt, sand or grit during shipment. A Molybdenum-Base lubricant is recommended.
3. Each nut is assembled by hand to be sure that it went on the bolt freely.
4. The bolts and nuts are handled carefully to avoid damage to the threads.
5. The bolts and nuts are made to exacting specifications to assure that the correct material is used and that the thread form is correct.

Stainless hardware is especially susceptible to galling. JCM supplies specially coated nuts to eliminate the galling caused by over-torquing, but the bolt threads must be kept clean, free from nicks and not pitched or thrown into the tool bucket during the installation process. Use of pneumatic wrench for installation could cause hardware to seize and is not recommended.

For additional guidance, contact JCM Industries Technical Services at 1-800-527-8482.