

JCM 106 Bell Joint Leak Clamps - IPS PVC, IPS HDPE



JCM 106 Bell Joint Leak Clamps - For quick repair or water tight joint assurance for rubber joint PVC pipe, solvent weld pipe or coupled pipe specify JCM 106 Bell Joint Leak Clamps. These clamps are engineered to provide a simple, dependable repair or assured joint. In addition, the JCM 106 eliminates possible notching of PVC pipe and offers maximum versatility and corrosion resistance.

Nom Pipe Size (IN)	Clamp OD Range (IN)	Catalog Number	List Price Each	Appr Wt Each Lbs	Max Bell OD	Max Lip OD	Overall Length*	Max Std Cplg Length
4	4.50	106-0450	\$ 283.90	12	6.13	5.43	11.5	7
6	6.63	106-0663	311.90	17	8.25	7.56	11.5	7
8	8.63	106-0863	431.20	21	10.88	9.56	11.5	7

Dimensions shown in inches

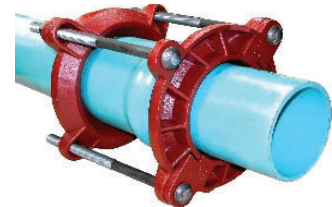
*Dimension will change with use of studs

JCM 143 Pipe Sizes 4" - 12" Cast Iron Pipe, Ductile Iron Pipe, C-900 PVC

Strong - Split, interlocking rings provide a solid base for maximum gasket compression. Heavy duty ductile iron components for the life of the pipeline. Clamp comes complete to repair cast iron, ductile iron and C-900 PVC in its nominal size. Simple transfer from shelf to job site to pipe joint without confusion. Install under pressure to repair leaking joint or install as a leak preventative on older pipe joints that have been excavated or disturbed during other pipeline maintenance (a low-cost, long-term insurance policy).

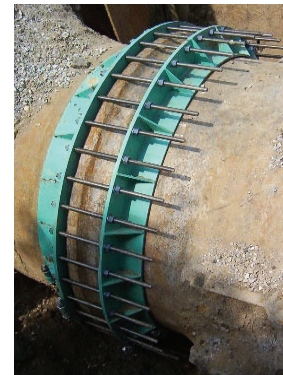
JCM 143 Pipe Sizes 14" and Larger for Ductile Iron/Cast Iron Pipe, C900, HDPE Fused Couplings

Fabricated Bell Joint Leak Clamps with split, bolt-on designed provides a positive seal for large diameter Ductile Iron and Cast Iron leaking bells. Designed for long-term service and immediate delivery



JCM 143 Bell Joint Leak Clamps - CI, DI, C900, DI/HDPE

Nom Pipe Size (IN)	Clamp OD Range (IN)	Catalog Number	Max Bell OD (IN)	List Price Each	Appr Wt Each Lbs
4	4.80 - 5.00	143-0480	8.69	\$ 281.10	23
6	6.90 - 7.10	143-0690	11.13	310.30	27
8	9.05 - 9.30	143-0905	13.50	430.00	43
10	11.10 - 11.40	143-1110	15.50	579.00	51
12	13.20 - 13.50	143-1320	17.88	668.20	59
14	15.30	143-1530	20.56	2,406.10	150
16	17.40	143-1740	23.25	2,766.30	160
18	19.50	143-1950	25.75	2,973.70	220
20	21.60	143-2160	27.94	3,245.50	318
24	25.80	143-2580	32..38	3,799.70	380
30	32.00	143-3200	38.88	4,616.70	500
36	38.30	143-3830	45.31	5,755.60	691



Certified to
NSF/ANSI/CAN 61
& NSF/ANSI 372

JCM 143 Bell Joint Leak Clamp 14" and Larger - Fabricated Steel

Sizes 14" and larger based on working ranges of industry standard pipe tolerances +/-

To ensure exact fit when ordering provide specific bell/spigot outside diameters.

Larger Sizes & Other Ranges Available, Contact JCM Sales Team 1-800-527-8482 or 903-832-2581.