



Installation Instructions

Model 121 Gas Repair Clamp Model 123 Gas Service Clamp

Read instructions before starting installation*

Review of "Tricks of the Trade" on the reverse will assist with installation.

DO NOT USE FOR PLASTIC GAS PIPE

DO NOT USE FOR THE REPAIR OF POLYETHYLENE GAS PIPE. Suitable for reshaping and marking squeeze off locations.

1. Clean and scrape pipe. Remove any scale, pipe wrap, debris or dirt that may interfere with the complete sealing of the gasket. Inspect pipe for integrity, size, outside diameter and surface irregularities. Confirm the proper size and range of repair clamp. Inspect fitting to ensure all parts are included.

For fittings furnished with stainless steel hardware, see reverse for fastener management.

2. Lubricate the pipe and the fitting gasket with soapy water. **Do not use oil base pipe lubricant.** Loosen nuts of bolts and back nuts to the end of the bolt (complete removal of bolts is not necessary). Release oval necked bolts from lug ears and open the clamp.
3. Place clamp on pipe and center over damaged area. Tuck tapered gasket in place; mesh finger lugs and rotate clamp in direction of arrow to smooth tapered gasket flap. Position bolting lug for easy access to continued bolt tightening. Engage bolts in receiver lugs and finger tighten to hold in place. Begin bolt tightening sequence.
4. Tighten all bolts evenly to the following torque values, ensure torque values with calibrated field torque wrench:

Nominal Sizes 3" and smaller -	50 Foot Pounds
Nominal sizes 4" and larger -	80 Foot Pounds

5. Complete installation of fitting, return after approximately 15 minutes and confirm minimum bolt torque levels have been maintained.

For JCM 123 Service Clamps, proceed with process.

For Use on Natural Gas Distribution Applications

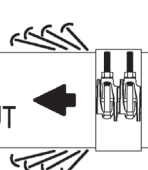
Rating:	CIP	2" thru 8"	100 PSI Gas
	CIP	10" and 12"	60 PSI Gas
	Steel	1-1/4" thru 8"	100 PSI Gas
	Steel	10" and 12"	60 PSI Gas

WARNING:

When pipe pullout could occur, pipe joint **MUST** be anchored. Failure to anchor pipe joint could result in escaping gas that could ignite and cause property damage, serious injury or death.

NOTE: Installation instructions included with product are printed on white tag which is attached to the product. This sheet is for submittal/customer service use.

⚠ WARNING

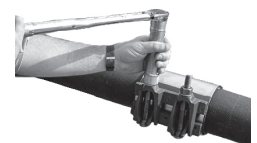
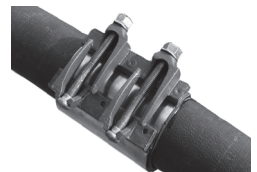
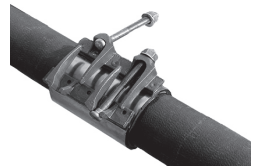
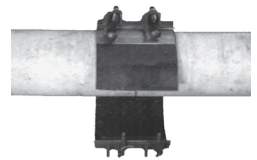
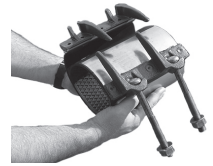


PIPE PULLOUT

MUST

BE ANCHORED.

FAILURE TO ANCHOR PIPE JOINT COULD RESULT IN ESCAPING GAS THAT COULD IGNITE AND CAUSE PROPERTY DAMAGE, SERIOUS INJURY OR DEATH.



INT121-0319

*Ensure fitting is suitable for application (confirm size, materials, pressure ratings, line content, meets local governing & association standards, etc.). Pipeline operation forces, including pressure fluctuations, thermal expansion/contraction, movement/shifting, etc. will influence the success of the application. Proper anchorage, restraint, harnessing, thrust blocks or other devices must be provided to prevent pipe movement (lateral, angular, axial) or pipe pullout from the bolt-on fitting. Inspection of the pipe integrity is the responsibility of the end user. JCM recommends the use of calibrated torque wrench. Failure to follow installation instructions will result in voided product warranty.

For application review or questions contact JCM Industries at 1-800-527-8482, 903-832-2581



Tricks of the Trade for Installation

Model 121 Gas Repair Clamp Model 123 Gas Service Clamp

Years of field experience, special applications and product testing have revealed many subtleties regarding application and installation of repair clamps. For maximum performance under adverse conditions take advantage of the JCM "Tricks of the Trade."

- Always clean and lubricate pipe with water or soapy water. This helps overcome friction when rotating the clamp to smooth the gasket. Do not use oil base pipe lubricant; the oil does not disperse, leaves residue and prevents the gasket from sealing/adhering to the pipe wall. Use water solvent lubricant. Use of a mirror will assist inspection of backside of pipe or pipe in cramped, limited space.
- Place a reference mark on the pipe back from the damaged area to help in centering clamp over break. Clamps provide maximum performance when centered over damage area.
- For installation on pipe under pressure: lubricate the clamp gasket with soap/water mixture, assemble clamp on the pipe beside the damaged area, lightly engage bolts and slid the clamp over the damaged area, ensure tapered gasket lays flat without curl or fold, proceed with installation steps.
- Breaks involving deflected pipe require a wider clamp. JCM lugs will articulate, permitting clamp to better conform to pipe.
- When repairing holes, gouges or centralized damage, position the bolting lug over the damaged area to provide additional gasket compression at the location.
- Damage involving large holes or massive pitted areas - use stainless steel plate over large holes (under repair clamp) to provide the gasket a surface to seal against.
- Lubricating clamp bolts will ease clamp installation and assure proper torquing of bolts.



JCM Quality Fitting Equipped With 18-8 Stainless Steel Bolts and Nuts

When not properly handled it is the nature of stainless steel fasteners to gall and freeze (seize up). This is due to the inherent properties of the stainless material. Galling and freezing is often triggered by the presence of metal chips, burrs and grains of sand on the threads of the bolts and nuts. Extra care has been taken by JCM prior to assembly and packing of this fitting to assure a trouble-free installation.

1. The nuts and bolts are made from material of different hardness so that they have different strengths.
2. Standard 5/8" and 3/4" nuts are coated with a special blue or green (antiseize) coating. Additional lubricant may be needed. Uncoated stainless steel hardware is provided without lubrication to prevent a build up of dirt, sand or grit during shipment. **A Molybdenum-Base lubricant is recommended.**
3. Each nut is assembled by hand to be sure that it went on the bolt freely.
4. The bolts and nuts are handled carefully to avoid damage to the threads.
5. The bolts and nuts are made to exacting specifications to assure that the correct material is used and that the thread form is correct.

Stainless hardware is especially susceptible to galling. JCM supplies specially coated nuts to eliminate the galling caused by overtorquing, but **the bolt threads must be kept clean, free from nicks and not pitched or thrown into the tool bucket during the installation process.** Use of the **JCM 901 Master Wrench or JCM 905 Torque Wrench with Deep Socket is highly recommended.** Use of pneumatic wrench for installation could cause hardware to seize and is not recommended.