

JCM INDUSTRIES

P. O. Box 1220, Nash, TX 75569-1220

Phone 800-527-8482 or 903-832-2581

Fax 800-874-9524 or 903-838-6260

www.jcmindustries.com

Typical Specification

JCM 419 Fabricated Tapping Sleeve with Mechanical Joint Outlet Shop Coat Primer, Alloy Hardware

Tapping Sleeves shall be the high strength type having a wide body, made of a minimum material strength of ASTM 285 Grade C, ASTM A-36 Steel or equal, which conforms to and reinforces the pipe. The sleeve shall have as a minimum 7/8" wide gasket of Nitrile Butadiene Rubber (NBR, Buna-N) per ASTM D2000 with hydromechanical activated lip, captured in a recessed groove around the outlet; 3/4" Corrosion resistant, high strength low alloy oval neck track head bolt per ASTM A242/ANSI 21.11/AWWA C-111 and heavy hex nut per A563 epoxy coated, Powercron 590-534 or equal, and a test outlet. Tapping Sleeve shall be furnished with corrosion resistant shop coat paint primer.

Mechanical Joint Outlet* shall meet the ANSI 21.11/AWWA C-111 Standards for Mechanical Joint Dimensions. Outlets 3" - 12" shall be of one unit "monocast" design without separate or affixed components. Outlet shall be furnished with load bearing alignment set pins to prevent movement of the tapping assembly before or during the tapping process.

For outlet sizes 14" and larger, the gasket groove must be consistently positioned about throat of tapping waterway. Inside diameter of the gasket groove must be set back a minimum of 1" from the waterway to allow dispersal of forces generated by gasket compression. Gasket grooves machined in a circle and formed to an elliptical shape will not be an accepted equal.

Nominal pipe sizes 36" and larger shall be of the heavy duty type. Tapping Sleeves shall be JCM 419 or approved equal.

JCM 400 Series Tapping Sleeves are ANSI/NSF Standard 61 & ANSI/NSF Standard 61 Annex G Certified. JCM 400 Series Tapping Sleeves meet MSS-SP124 and ANSI/AWWA Standard C223 Fabricated Steel and Stainless Steel Tapping Sleeves as applicable.

*Licensed by PowerSeal Corporation U. S. Patent No. 6,227,234



JCM 419 Fabricated
Tapping Sleeve
With MJ Outlet

This typical specification, provided by JCM Industries, is a proposed guideline for use by specifying agencies to ensure significant design and material features of this product are included within the agencies' individual specifications.



Effective 01.30.13

JCM INDUSTRIES

P. O. Box 1220, Nash, TX 75569-1220
 Phone 800-527-8482 or 903-832-2581
 Fax 800-874-9524 or 903-838-6260

www.jcmindustries.com

Material Specification

JCM 419 Fabricated Tapping Sleeve with Mechanical Joint Outlet Shop Coat Primer, Alloy Hardware

Body: ASTM 285 Grade C, ASTM A-36 Steel or equal.

Outlet: Carbon Steel meets ANSI 21.11/AWWA C-111 Standard Dimensions
 Outlets 3" & 4" furnished with 1/4" test outlet, outlets 6" and larger furnished with 3/4" test outlet

Gasket: Nitrile Butadiene Rubber (NBR, Buna-N) per ASTM D2000. Molded virgin rubber with a pressure activated hydromechanical design. Gasket is bonded into a cavity for internal and external retention. Gasket temperature range -40°F to 212°F (-40°C - 100°C) Gasket suitable for water, salt solutions, mild acids, bases, and sewage. Optional gasket materials available.

Bolts: Corrosion resistant, high strength low alloy oval neck track head bolt per ASTM A242/ANSI 21.11/AWWA C-111 and heavy hex nut per A563 epoxy coated, Powercron 590-534.or equal.

Finish: Heavy coat of corrosion resistant shop coat primer.

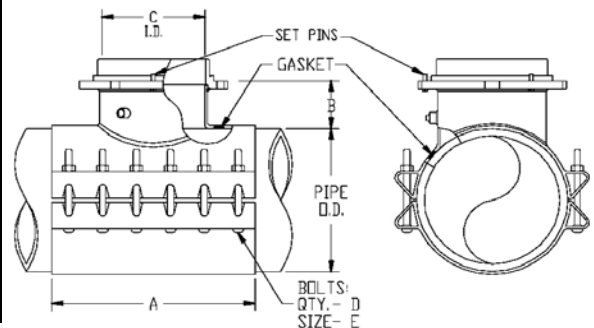
Service

Rating: 4" – 12"* pipe sizes: 250 PSI working pressure, hydrostatic test pressure of 300 PSI
 *12 x 12 with Stainless Bolts: 200 PSI working pressure, hydrostatic test pressure of 250 PSI
 14" – 24" pipe sizes: 200 PSI working pressure, hydrostatic test pressure of 250 PSI

JCM 400 Series Tapping Sleeves are ANSI/NSF Standard 61 & ANSI/NSF Standard 61 Annex G Certified.
 JCM 400 Series Tapping Sleeves meet MSS-SP124 and ANSI/AWWA Standard C223 Fabricated Steel and Stainless Steel Tapping Sleeves as applicable.

JCM 419 FABRICATED TAPPING SLEEVE - MECHANICAL JOINT OUTLET

OUTLET SIZE	A	B	C	D	E
3	12	4-7/8	3-5/16	6	3/4
4	12	5	4-1/4	6	3/4
6	12	5-1/8	6-5/16	6	3/4
8	16	5-1/4	8-5/16	8	3/4
10	20	5-1/4	10-3/8	10	3/4
12	24	5-1/4	12-3/8	12	3/4



Effective 01.30.13