

# JCM INDUSTRIES

P. O. Box 1220, Nash, TX 75569-1220

Phone 800-527-8482 or 903-832-2581

Fax 800-874-9524 or 903-838-6260

[www.jcmindustries.com](http://www.jcmindustries.com)

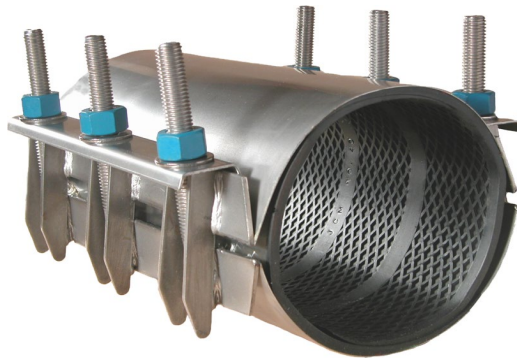
## Typical Specification

### JCM 162 Fabricated Lug, Multi Band All Stainless Steel Clamp Coupling

Full circumferential multi band repair clamps shall have a minimum material standard of 304 stainless steel band, bolt assembly and hardware. Fabricated lugs shall have permanently attached mutually supporting fingers and strong stainless steel lifter bar plate. The gasket shall be gridded with tapered lap joint ends and a 304 stainless steel bridge plate molded flush into the gasket. Gaskets in sizes 3" and larger shall be 1/4" thick. Clamps shall be JCM 162 or approved equal.

JCM 100 Series Clamps are ANSI/NSF Standard 6, Annex G, ANSI/NSF 372 Certified.

JCM 100 Series Universal Clamp Couplings meet or exceed ANSI/AWWA C230 Standard for Stainless –Steel Full-Encirclement Repair and Service Connection Clamps as applicable.



**JCM 162 Fabricated Lug All Stainless Steel  
Multi Band Clamp Coupling**

*This typical specification, provided by JCM Industries, is a proposed guideline for use by specifying agencies to ensure significant design and material features of this product are included within the agencies' individual specifications.*



Effective 01.30.19

# JCM INDUSTRIES

P. O. Box 1220, Nash, TX 75569-1220

Phone 800-527-8482 or 903-832-2581

Fax 800-874-9524 or 903-838-6260

[www.jcmindustries.com](http://www.jcmindustries.com)

## Material Specification

### JCM 162 Fabricated Lug All Stainless Steel Multi Band Clamp Coupling

**Bolt Assembly:** 18-8 Type 304 Stainless Steel

**Band:** 18-8 Type 304 Stainless Steel

**Bolts and Nuts:** 18-8 Type 304 Stainless Steel

**Gasket:** Virgin Styrene-Butadiene Rubber (SBR) - Compounded for use with water, salt solutions, mild acids and bases. Per ASTM D-2000 M4AA 607. Standard temperature range from -40° to 150° F (-40° to 65° C) constant, maximum intermittent 180° F (82° C). For applications on high temperatures or chemical pipelines, contact JCM Industries Technical Services.

JCM 100 Series Clamps are ANSI/NSF Standard 61, Annex G, ANSI/NSF 372 Certified.

JCM 100 Series Universal Clamp Couplings meet or exceed ANSI/AWWA C230 Standard for Stainless –Steel Full-Encirclement Repair and Service Connection Clamps as applicable.

For ranges and widths, see JCM Industries General Product Directory Catalog.

Information based on data available at the date printed below and subject to change without notice. Contact JCM Industries for amendments or changes.



Effective 01.30.19